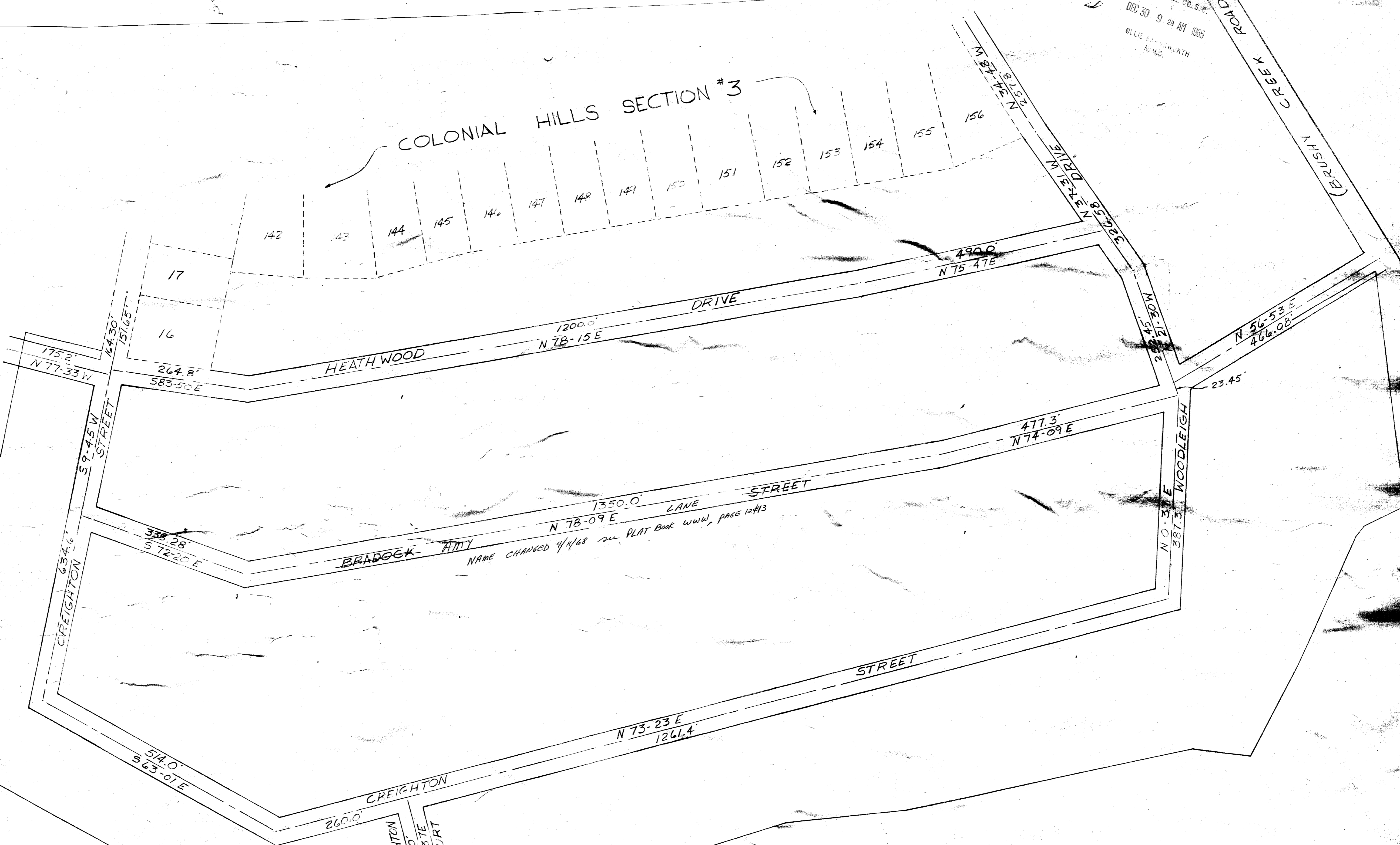
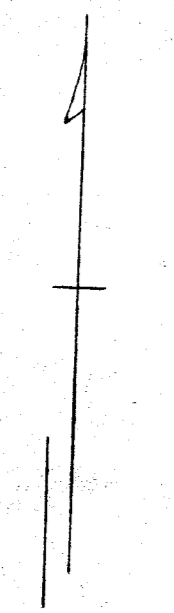


GREENVILLE CO. S.C.
DEC 30 9 29 AM 1965
OLLIE HANCOCK
S.M.D.

COLONIAL HILLS SECTION #3



STREET LAYOUT COLONIAL HILLS SECTION #4 NEAR GREENVILLE, S.C.

SCALE: 1"=100' DEC. 27, 1965

PIEDMONT ENGINEERS & ARCHITECTS
GREENVILLE, S.C.

Williams and Co Inc
By W. J. [Signature]

DEC 30 1965
19212

3.00
988-119